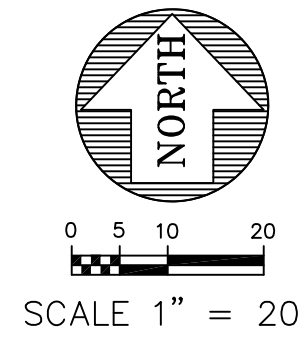


SE 1/4 OF SW 1/4 OF SEC. 12, TWP. 24 N., RNG. 4 E., W.M.  
CITY OF MERCER ISLAND, STATE OF WASHINGTON



- LEGEND**
- FOUND MONUMENT
  - FOUND CORNER AS NOTED
  - (M) MEASURED
  - (P) PLAT
  - ⊗ WATER VALVE
  - ⊙ FIRE HYDRANT
  - ⊕ GUARD POST
  - ⊕ WATER METER
  - ⊕ SEWER MANHOLE
  - ⊕ CATCH BASIN
  - SD—SD— STORM LINE
  - S—S— SEWER LINE
  - GAS— GAS LINE
  - W—W— WOOD FENCE
  - ⊕ ROCKERY
  - ⊕ UTILITY POLE
  - ⊕ GUY ANCHOR
  - ⊕ HEDGE LINE
  - ⊕ WETLAND FLAG
  - ⊕ WETLAND DATA POINT
  - ▨ ASPHALT HATCHING
  - ▨ CONCRETE HATCHING
  - ▨ GRAVEL HATCHING

**TAX PARCEL**  
362350-0226

**HORIZONTAL DATUM**  
NAD 83(2011) - WASHINGTON NORTH ZONE

**BASIS OF BEARINGS**  
N88°18'36"W BETWEEN MONUMENTS ON SE 38TH STREET

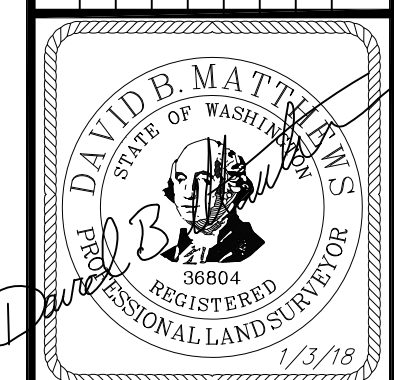
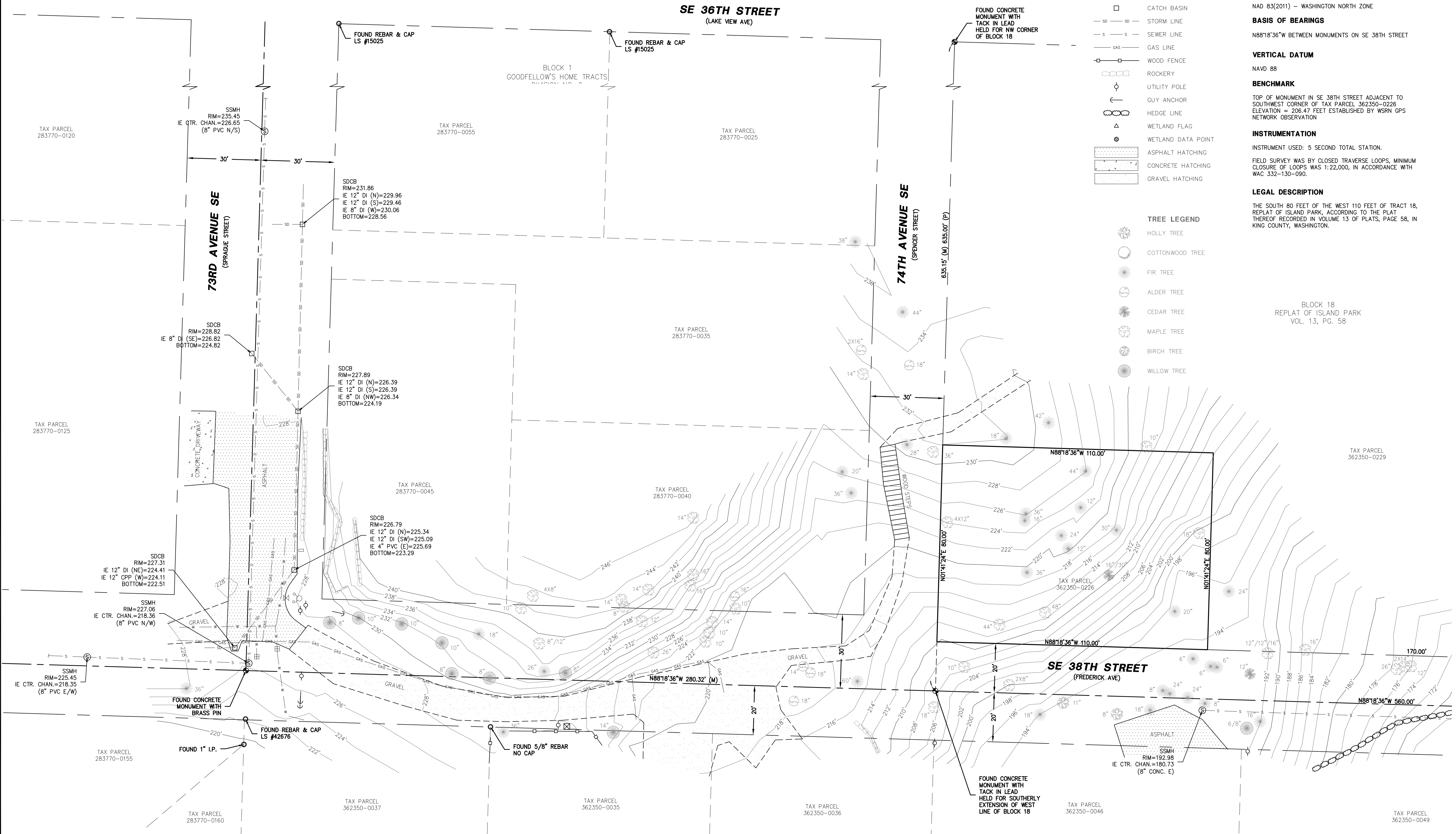
**VERTICAL DATUM**  
NAVD 88

**BENCHMARK**  
TOP OF MONUMENT IN SE 38TH STREET ADJACENT TO SOUTHWEST CORNER OF TAX PARCEL 362350-0226  
ELEVATION = 206.47 FEET ESTABLISHED BY WSRN GPS NETWORK OBSERVATION

**INSTRUMENTATION**  
INSTRUMENT USED: 5 SECOND TOTAL STATION.  
FIELD SURVEY WAS BY CLOSED TRAVERSE LOOPS, MINIMUM CLOSURE OF LOOPS WAS 1:22,000, IN ACCORDANCE WITH WAC 332-130-090.

**LEGAL DESCRIPTION**  
THE SOUTH 80 FEET OF THE WEST 110 FEET OF TRACT 18, REPLAT OF ISLAND PARK, ACCORDING TO THE PLAT THEREOF RECORDED IN VOLUME 13 OF PLATS, PAGE 58, IN KING COUNTY, WASHINGTON.

- TREE LEGEND**
- HOLLY TREE
  - COTTONWOOD TREE
  - FIR TREE
  - ALDER TREE
  - CEDAR TREE
  - MAPLE TREE
  - BIRCH TREE
  - WILLOW TREE

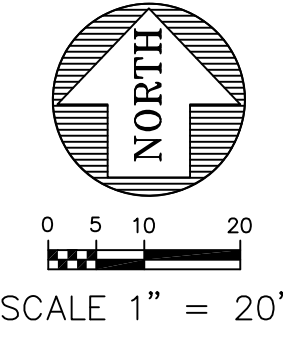


**HARRIS KLEIN**  
**TAX PARCEL 362350-0226**  
**BOUNDARY & TOPOGRAPHIC SURVEY**

**Encompass**  
ENGINEERING & SURVEYING  
Western Washington Division  
165 NE Juniper Street, Suite 201 • Issaquah, WA 98027 • Phone: (425) 392-0230 • Fax: (425) 391-3055  
Eastern Washington Division  
108 East 2nd Street • Cle Elum, WA 98922 • Phone: (509) 674-7433 • Fax: (509) 674-7419

<b>JOB NO.</b>	17722
<b>DATE</b>	1/3/18
<b>SCALE</b>	1"=20'
<b>DESIGNED</b>	
<b>DRAWN</b>	DBM
<b>CHECKED</b>	
<b>APPROVED</b>	
<b>SHEET</b>	1 OF 2

SE 1/4 OF SW 1/4 OF SEC. 12, TWP. 24 N., RNG. 4 E., W.M.  
CITY OF MERCER ISLAND, STATE OF WASHINGTON

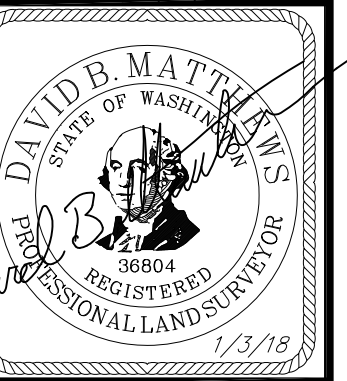
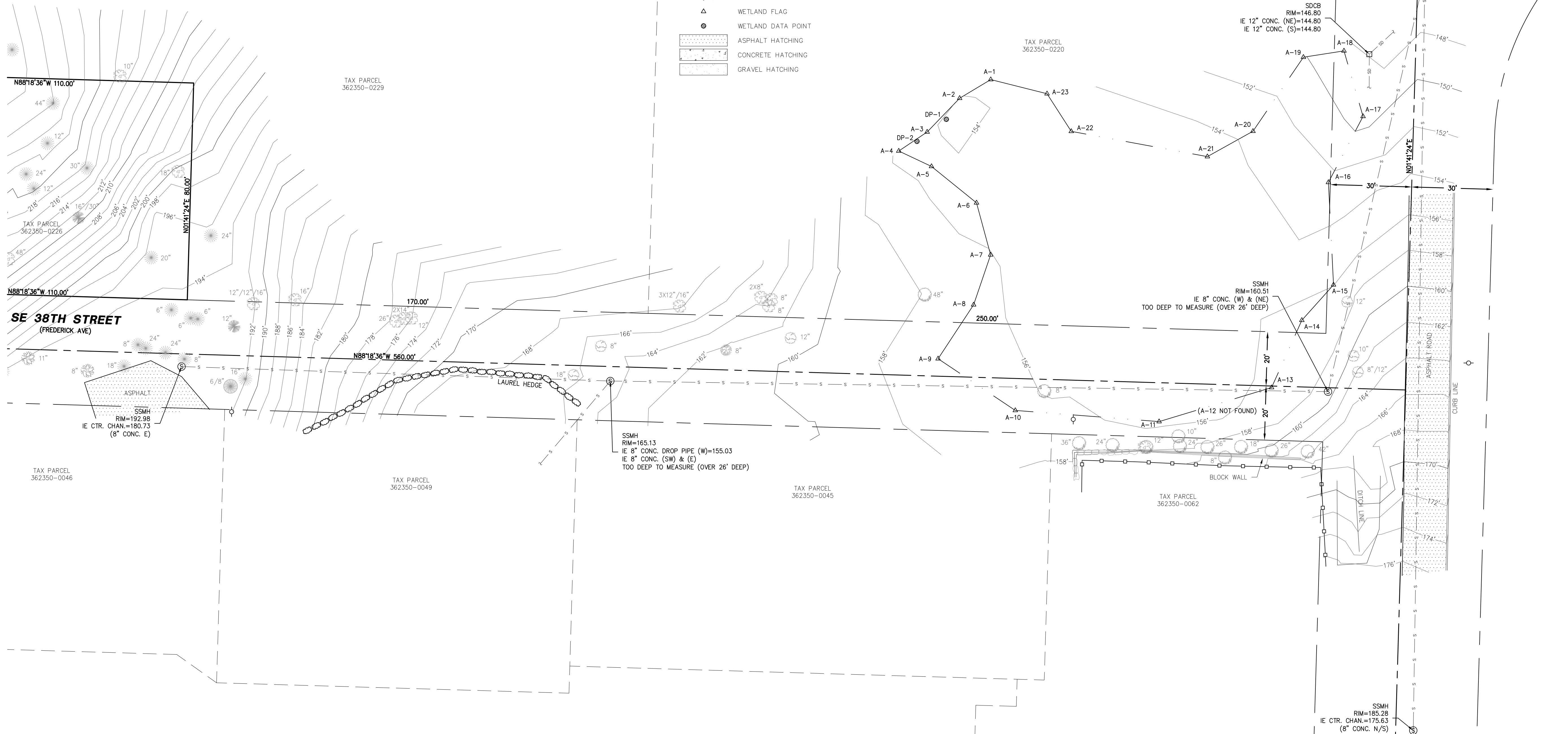


- LEGEND**
- FOUND MONUMENT
  - FOUND CORNER AS NOTED
  - (M) MEASURED
  - (P) PLAT
  - ⊗ WATER VALVE
  - ⊕ FIRE HYDRANT
  - GUARD POST
  - ⊕ WATER METER
  - ⊕ SEWER MANHOLE
  - CATCH BASIN
  - SO — STORM LINE
  - S — SEWER LINE
  - GAS — GAS LINE
  - WOOD FENCE
  - ⊕ ROCKERY
  - ⊕ UTILITY POLE
  - ⊕ GUY ANCHOR
  - ⊕ HEDGE LINE
  - △ WETLAND FLAG
  - ⊕ WETLAND DATA POINT
  - ▨ ASPHALT HATCHING
  - ▨ CONCRETE HATCHING
  - ▨ GRAVEL HATCHING

- TREE LEGEND**
- ⊕ HOLLY TREE
  - ⊕ COTTONWOOD TREE
  - ⊕ FIR TREE
  - ⊕ ALDER TREE
  - ⊕ CEDAR TREE
  - ⊕ MAPLE TREE
  - ⊕ BIRCH TREE
  - ⊕ WILLOW TREE

BLOCK 18  
REPLAT OF ISLAND PARK  
VOL. 13, PG. 58

BLOCK 17  
REPLAT OF ISLAND PARK  
VOL. 13, PG. 58



**HARRIS KLEIN**  
**TAX PARCEL 362350-0226**  
**BOUNDARY & TOPOGRAPHIC SURVEY**

**Encompass**  
ENGINEERING & SURVEYING  
Western Washington Division  
165 NE Juniper Street, Suite 201 • Issaquah, WA 98027 • Phone: (425) 392-0250 • Fax: (425) 391-3055  
Eastern Washington Division  
108 East 2nd Street • Cle Elum, WA 98922 • Phone: (509) 674-7433 • Fax: (509) 674-7419

JOB NO.	17722
DATE	1/3/18
SCALE	1"=20'
DESIGNED	
DRAWN	DBM
CHECKED	
APPROVED	

REVISIONS	BY	DATE